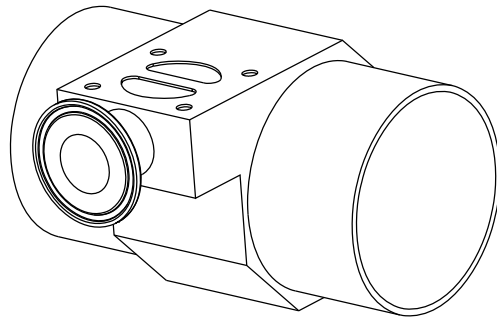
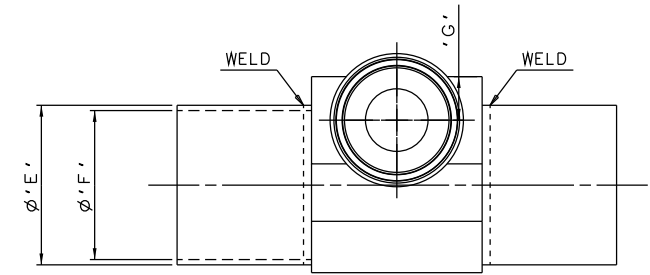
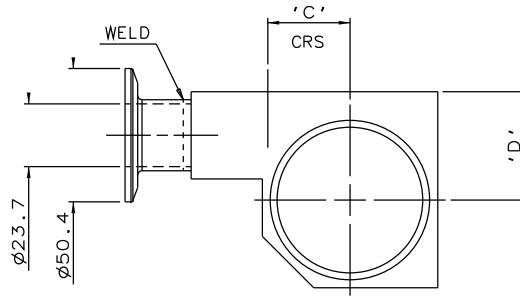
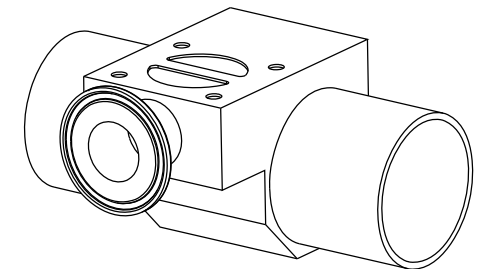
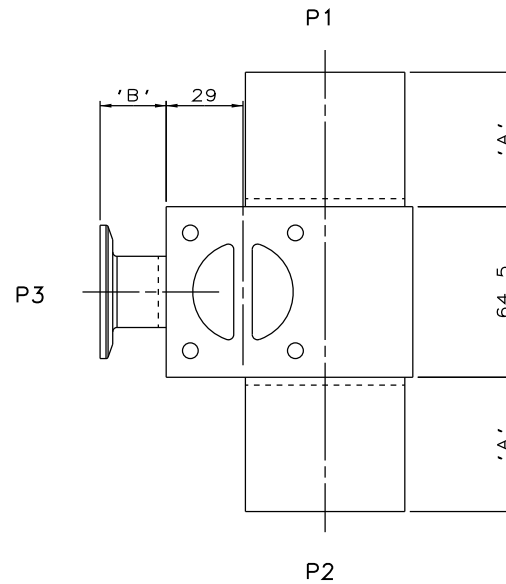


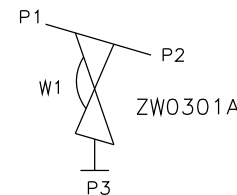
DN20 MAINLINE ONLY



DN65 TO DN100
MAINLINE ONLY



DN25 TO DN50
MAINLINE ONLY

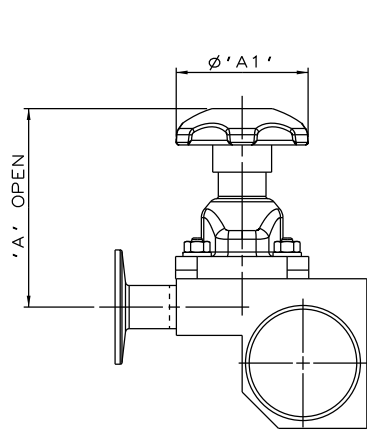


ORIENTATION AS PER
P&ID DIAGRAM FOR
OPTIMUM DRAINABILITY.

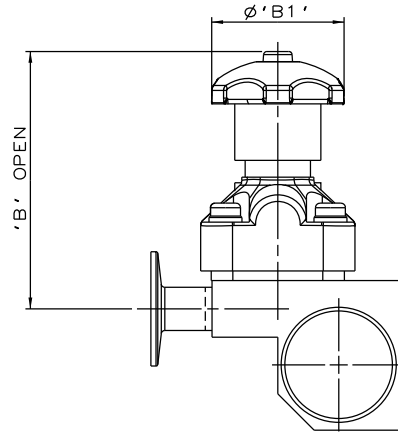
The information on this sheet is Private and Confidential and is the property of Crane Process Flow Technologies Limited and must not be published directly or indirectly in any manner whatsoever without the written permission of the Company and must not be used in any way detrimental to their interests.
© Crane Process Flow Technologies

CRANE Process Flow Technologies A Crane Co. Company		Saunders The Science Inside		
Title SCHEDULE OF LEADING DIMENSIONS FOR DN20 WEIR 'T' BODY COMPLETE WITH : MAINLINE : ISO 1127 S1 BUTT WELD ENDS BRANCH : DN20 HYGIENIC CLAMP END WITH ISO 1127 S1 BORE				
Drawn JRD	Date 14.10.11	UNCONTROLLED IN HARD COPY FORMAT		
Checked RND	Date 22.03.12			
First Angle Projection Method E		DO NOT SCALE	Drawing No. WEB-084	Issue. 3

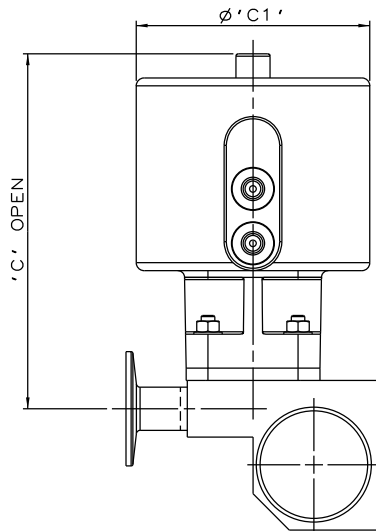
MAINLINE SIZE	A	B	C	D	øE	øF	G	BODY WEIGHT
mm	mm	mm	mm	mm	mm	mm	mm	Kgs
DN20	50.8	25.0	15.4	26.5	26.9	23.7	15.5	0.9
DN25	50.8	25.0	18.4	30.0	33.7	29.7	16.5	1.1
DN32	50.8	25.0	22.7	34.5	42.4	38.4	15.5	1.3
DN40	50.8	25.0	25.7	37.0	48.3	44.3	16.5	1.4
DN50	50.8	25.0	31.1	41.0	60.3	55.1	16.5	1.8
DN65	50.8	25.0	39.0	46.0	76.1	70.9	15.5	1.9
DN80	50.8	25.0	45.4	49.0	88.9	83.7	15.5	2.2
DN100	101.6	25.0	58.1	60.2	114.3	109.1	15.5	3.3



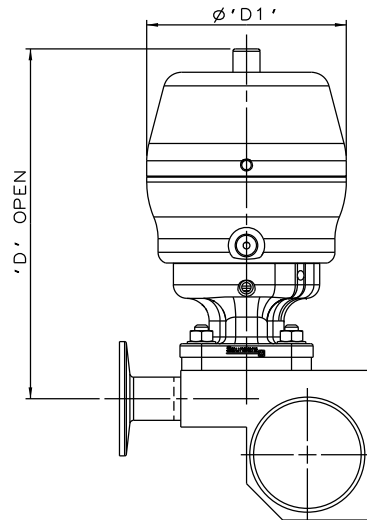
SS NON SEALED
BONNET ASSEMBLY



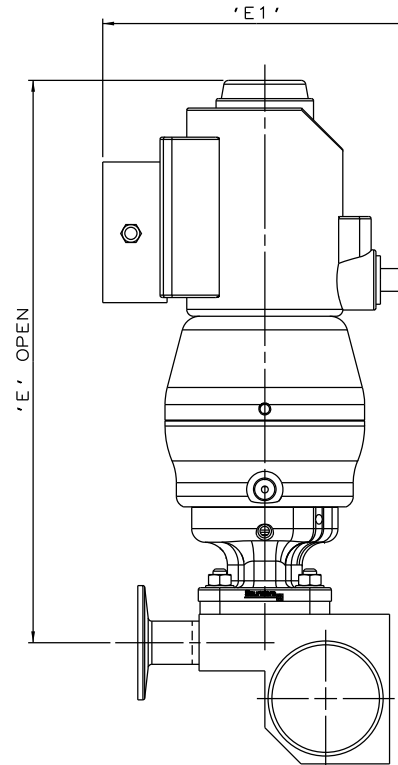
PES BONNET
ASSEMBLY



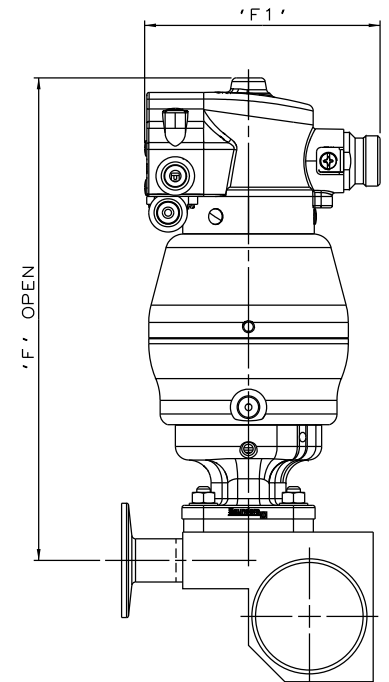
EC ACTUATOR
(ALL MODES)



*S360 ACTUATOR



*S360 ACTUATOR
WITH I-VUE SENSOR



*S360 ACTUATOR
WITH M-VUE SENSOR

The information on this sheet is Private and Confidential and is the property of Crane Process Flow Technologies Limited and must not be published directly or indirectly in any manner whatsoever without the written permission of the Company and must not be used in any way detrimental to their interests.
© Crane Process Flow Technologies

CRANE	Process Flow Technologies A Crane Co. Company	Saunders The Science Inside
--------------	--	---------------------------------------

Title
SCHEDULE OF LEADING DIMENSIONS FOR DN20/0.75 WEIR
'T' BODY (DN20/0.75 BRANCH) WITH MAINLINE BUTT WELD ISO 1127 S1
ENDS, BRANCH HYGIENIC CLAMP END WITH ISO 1127 S1 BORE.
FITTED WITH TOPWORKS OPTIONS

Drawn	R1	Date	09.05.17	UNCONTROLLED IN HARD COPY FORMAT
Checked	RND	Date	09.05.17	
First Angle Projection Method E		DO NOT SCALE	Drawing No. WEB-084-ASSY	Issue. 1

* DIMENSIONS SHOW MAXIMUM ENVELOPE FOR ALL MODES

BRANCH SIZE	A		A1		B		B1		C		C1		D		D1		E		E1		F		F1		
	mm	inch	mm	inch	mm	inch	mm	inch	mm	inch	mm	inch	mm	inch	mm	inch	mm	inch	mm	inch	mm	inch	mm	inch	
DN20	0.75	91.5	3.60	62.0	2.44	117.5	4.63	62.0	2.44	160.5	6.32	103.0	4.05	167.5	6.59	98.0	3.87	263.5	10.37	136.0	5.35	228.5	9.00	103.8	4.09